



“ We finally found somewhere where the staff actually think of my son’s needs first, not their own, and what works for him rather than what works for them. ”

A specialist independent day school for children and young people aged 6 to 19 with severe, profound and multiple learning difficulties and complex needs.

## At The **Aurora** Group

We believe in giving people the opportunities they need to create and lead fulfilling, independent lives.

Established in 2015, we are now the UK's sixth largest provider of education, care and support services for children and young people with special educational needs and disabilities. Each of our schools, colleges and residential homes retains its own unique identity while embracing and embodying our group's core values:

- We are caring. We understand that your experience in mainstream care and education may have been a difficult one. We take seriously our responsibility for the children and young people in our care, and are committed to making your time with us as positive and fulfilling as possible.
- We are ambitious. We have high expectations of all our children and young people, regardless of what barriers they may have faced in the past. We encourage them to expect more for themselves, while challenging employers and communities to understand and value their diverse needs and attributes.
- We are collaborative. Everything we do, we do in partnership with you. We actively seek and listen to feedback from students, parents and staff, to find out what's working well, what we can do better, and how we can further develop all our services to benefit the people we work with.
- We are trusted. Our business is funded by ethical investors. They understand that sustainable growth is possible only when we hold ourselves to the highest standards, by delivering consistently top-quality services to every single person we work with.
- We are innovative. We begin planning for each young person's future the minute they walk through our doors. We tailor our approach to their unique needs, and are constantly looking for new opportunities to help them explore, enhance and employ their own skills, talents and abilities.

# Welcome

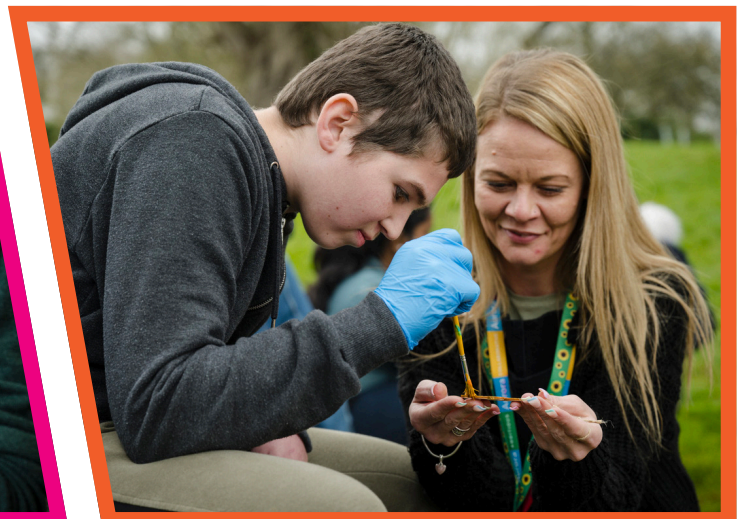
Here at Aurora Meldreth Manor School we are proud of our uniqueness and celebrate this in all we do. We are a passionate team that put the opportunity to provide the best possible outcomes for our children and young people in their preparation for adult life at the centre of all we do and all our decision making.

Our numerous awards are an accolade to the achievements of our students with the skilful support of our team. We are a highly specialised provision with a particular strength in meeting the needs of students who prefer to learn and be outside.

We aim to ensure that all our students are able to safely access, be accepted and valued within their community by making meaningful contributions within it.

Here at Aurora Meldreth Manor School we are fortunate to have such a comprehensive specialist provision of high quality facilities and resources. Our therapy team work collaboratively with our education team to ensure the students make the best possible progress and promote improved life chances.

We are looking forward to welcoming you to find out more about our wonderful school and students.



## Our curriculum

Our person centred curriculum is built around the individual. Our students have their own bespoke route through a play-based curriculum at KS1, three curriculum pathways at key stages 2-3 and preparing for adulthood curriculum from post 14 onwards. The development of life skills and future aspirations is a key learning objective throughout all years and is supported by a robust careers programme specially designed for SLD learners. We recognise the other features that develop rounded young people and have a special character curriculum that aims to develop our young people's self-esteem, resilience and social skills, this is delivered through our house teams competitions that encourage students to work together to achieve points by learning about themes such as antibullying, charity and kindness. These are carefully linked to our Aurora values. Our students all have their own bespoke route through our six curriculum pathways students are taught a varied and rich curriculum to prepare them for adult life. We are aspirational that all our students gain some form of formal accreditation during their time with us.

We are aspirational that students gain some form of formal accreditation inclusive of the Duke of Edinburgh award, functional skills, work skills and aspirational subjects such as horse riding and gardening. We make use of strategies that are appropriate to the individual. These may include, Sensory Integration, Intensive Interaction, TEACCH and Attention Autism teaching strategies to support our students.

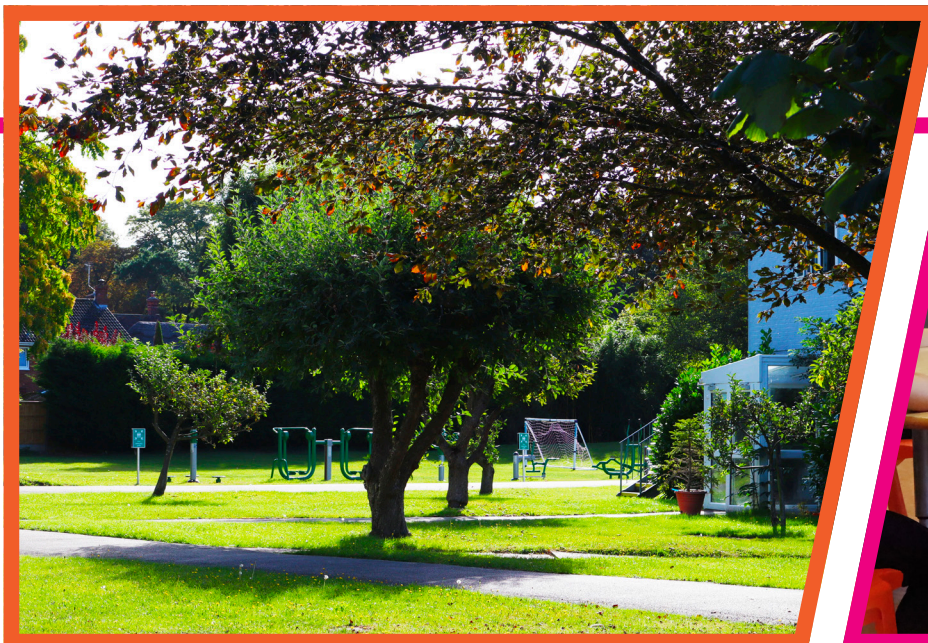
We provide an integrated therapy approach, which is led by an experienced and comprehensive on site therapy team which includes Physiotherapists, Speech and Language Therapist, and Occupational Therapist. We have weekly Music therapist and Pet therapist provision.

Development of each student's communication and self-regulation are a significant focus of support. In addition to students with traditional verbal abilities we support students who are non-verbal, pre-verbal and developing their verbal skills. We use a range of communication systems including Makaton signing, TaSSels, Symbols, switches, low and high-tech devices, such as eye gaze technology and communication books.

We have a high staff to student ratio and classes are small and personal – we know each of our students' needs and potential and are able to employ the best strategies to support them in preparation for adulthood.

Classes are grouped according to students' communication needs, academic levels and potential and sensory needs, cognitive understanding and compatibility. Age is taken into consideration within regard to age appropriate curriculum and resources.





## Our facilities

Aurora Meldreth Manor School is situated on a beautiful 14-acre site in the village of Meldreth, on the border of Cambridgeshire and Hertfordshire. We share our amazing grounds with Meldreth Manor Children's home and Orchard Manor Adult Transitional service.

Our facilities are fully inclusive and well equipped to meet the needs of all Children and young people.

Our outdoor facilities include:

- Forest school
- Inclusive play area
- Learning zones
- Musical garden
- Sensory growing areas
- Outdoor gym

Our indoor facilities include:

- Each classroom is bespoke to meet the needs of the students
- High spec sensory rooms
- UV dark room
- Food technology rooms
- Newly refurbished hydrotherapy pool
- Rebound therapy
- Spiritual room
- Exam rooms
- ICT suite

We provide an integrated therapy approach at Aurora Meldreth Manor School, which is led by an experienced and comprehensive on site therapy team including Physiotherapy, Speech and Language and Occupational therapy. We have weekly Music therapist and Pet therapist provision.

## Forest School

At Meldreth Manor School we believe that all disabilities are individual, and it is our mission to empower uniqueness in every person we support so that they can grow with their own set of goals and skills to follow their dreams.

Forest school is an integral part of our curriculum and we run sessions at least three times a week for all key stage and post 16 classes.



## Residential Facilities

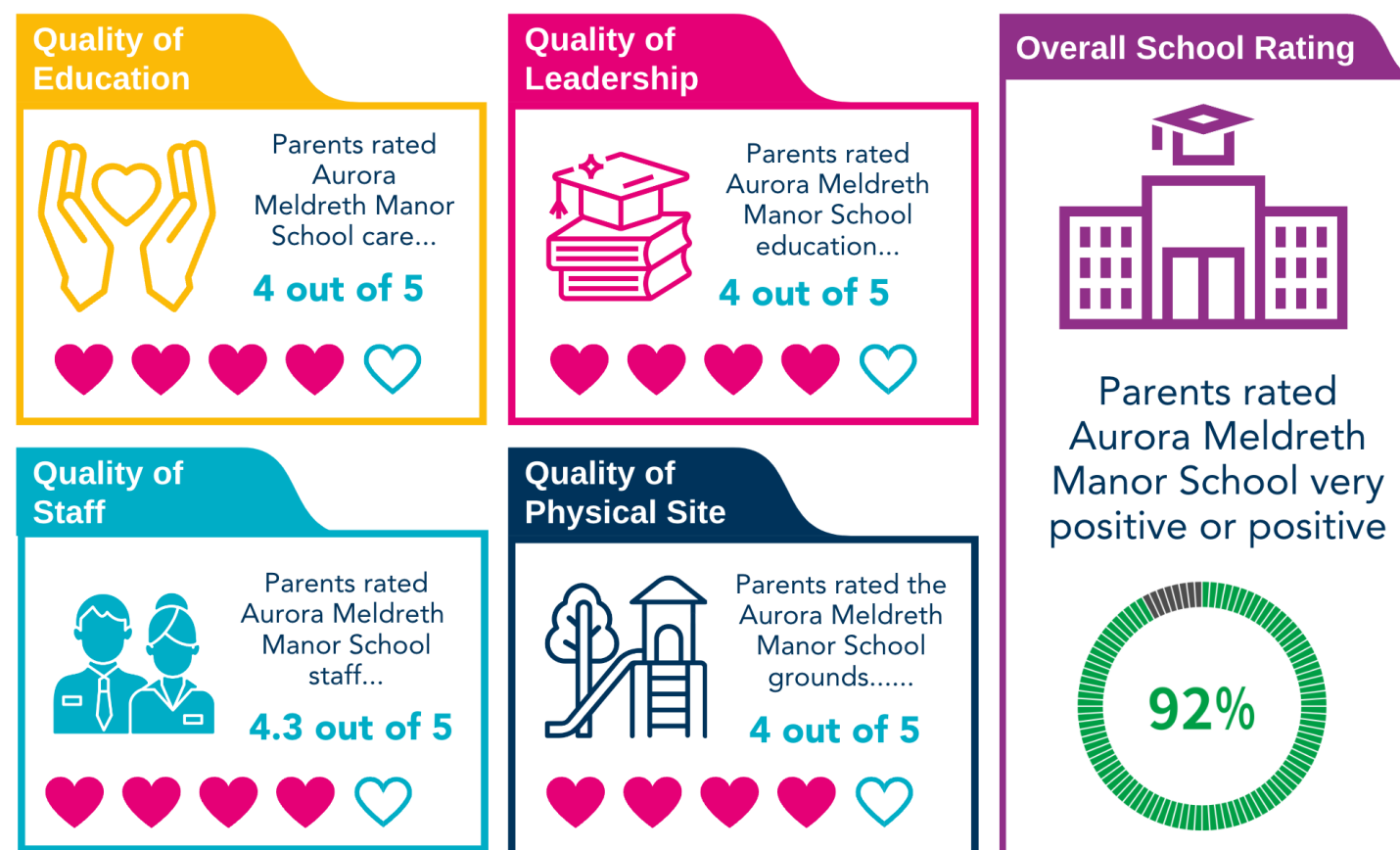
Meldreth Manor Children's Home can be found on the same site as the school. It offers flexible residential placements for up to 52 weeks, including weekly boarding and shared-care arrangements or residential care placements for young people accessing other local schools.

## Outcomes

- 100% of the children and young people access an integrated therapeutic curriculum in preparation for adulthood.
- All our outdoor learning areas are fully inclusive, these include a Forest School, a Musical Garden as well as a number of Outdoor Learning Stations.
- 100% of children and young people work towards formal qualifications such as AQA awards.



## Parent Feedback



## Our commitment to you

### Quality statement

At Aurora Meldreth Manor School we strive to provide the highest quality service to young people, parents/carers and local authorities. We believe that all these groups have the right to comment on the service we provide and to understand the complaints procedure.

If you do have a concern or complaint, we do want to hear about it as soon as possible. Please ask the office for a copy of our complaints procedure if you would like to know more. We like to know when we are getting things right too, so please feel free to also send us any compliments – our staff are always happy to hear them!

### Safeguarding statement

At Aurora Meldreth Manor School we are wholly committed to safeguarding and promoting the wellbeing of the children in our care, and we expect all staff and visitors to share this commitment.

Safer recruitment practices are followed and all staff have an Enhanced DBS check.



## Contact Us

For more information please contact us at:

### **Aurora Meldreth Manor**

Fenny Lane  
Meldreth  
Royston  
SG8 6LG

**01763 268 000**

[meldreth.manor@the-aurora-group.com](mailto:meldreth.manor@the-aurora-group.com)  
[referrals@the-aurora-group.com](mailto:referrals@the-aurora-group.com)  
[www.theauroragroup.co.uk/meldrethmanor](http://www.theauroragroup.co.uk/meldrethmanor)



Children with complex and severe learning difficulties.



6-19



Mixed



38 Weeks Day

**Caring**

**Ambitious**

**Collaborative**

**Trusted**

**Innovative**



[www.theauroragroup.co.uk](http://www.theauroragroup.co.uk)



020 3617 0170



[info@the-aurora-group.com](mailto:info@the-aurora-group.com)



AuroraGroupUK



The\_AuroraGroup



The Aurora-Group



the\_auroragroup